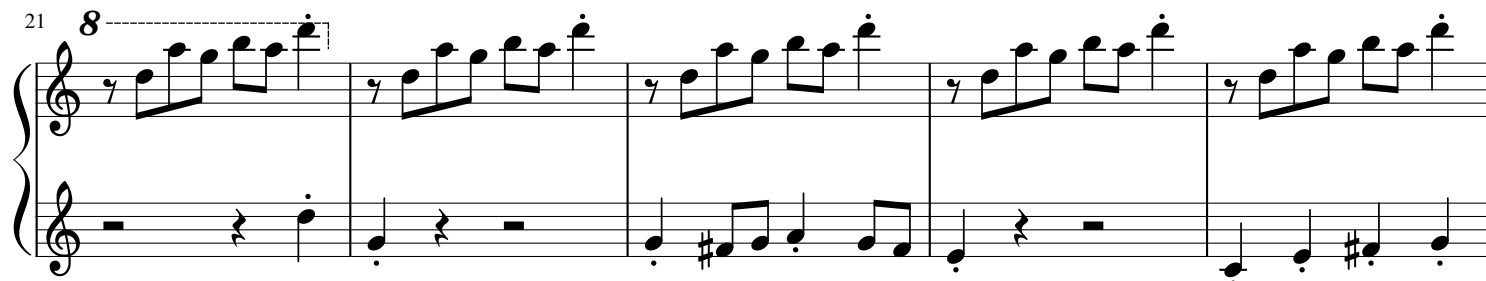
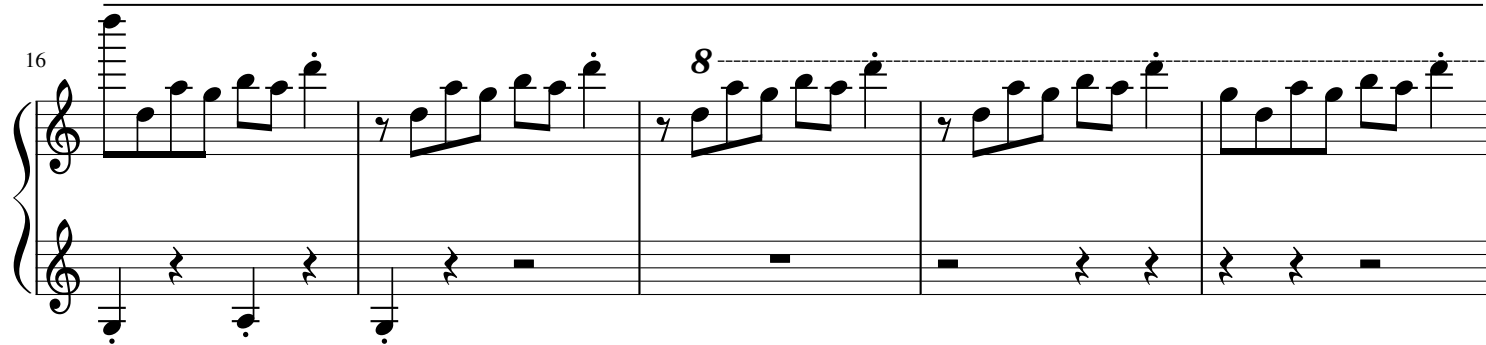
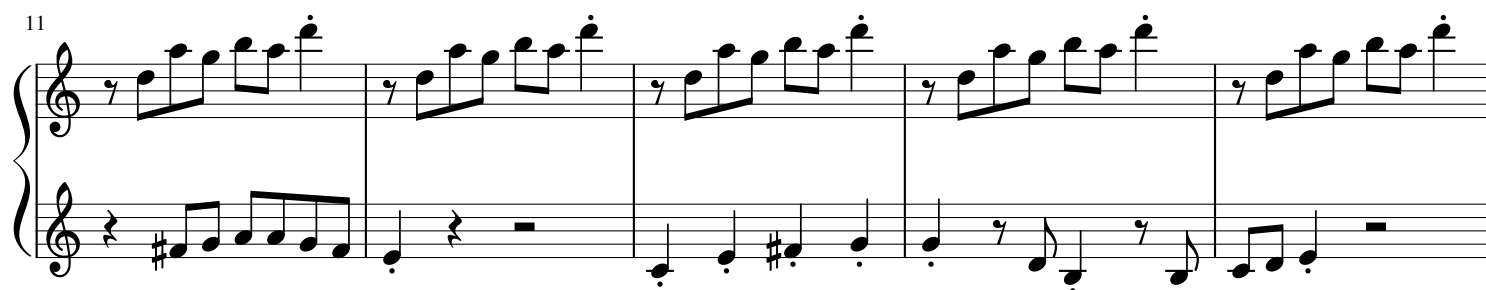
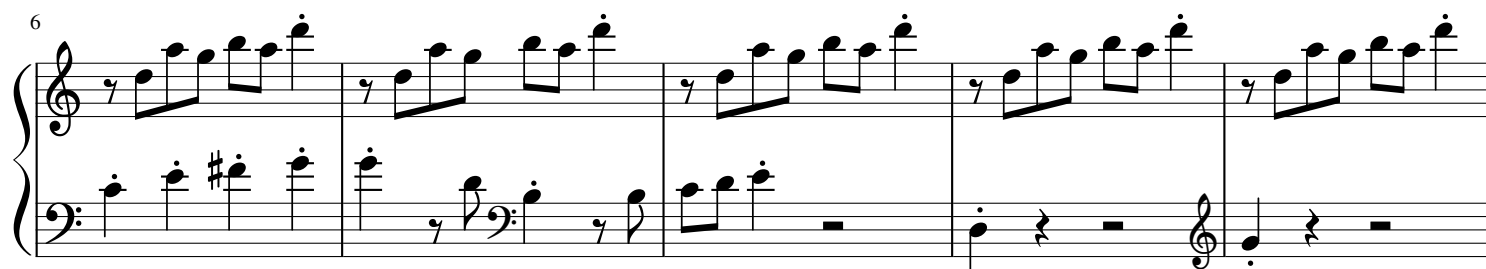
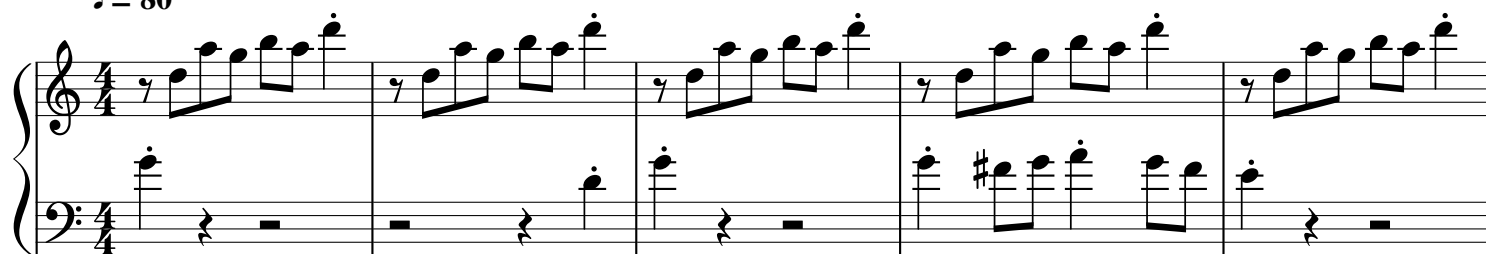


# Stale Cupcakes

Arranged by ElPapiofItay  
Composed by Kazumi Totaka

♩ = 80



26

Measures 26-30: The right hand plays a continuous eighth-note melody starting on G4, moving up stepwise to B4. The left hand provides a harmonic accompaniment with chords and single notes.

31

Measures 31-35: The right hand continues the eighth-note melody. The left hand features more complex chords and a melodic line in measures 34 and 35.

36

Measures 36-37: Measure 36 shows the continuation of the melody. Measure 37 is a final chord.